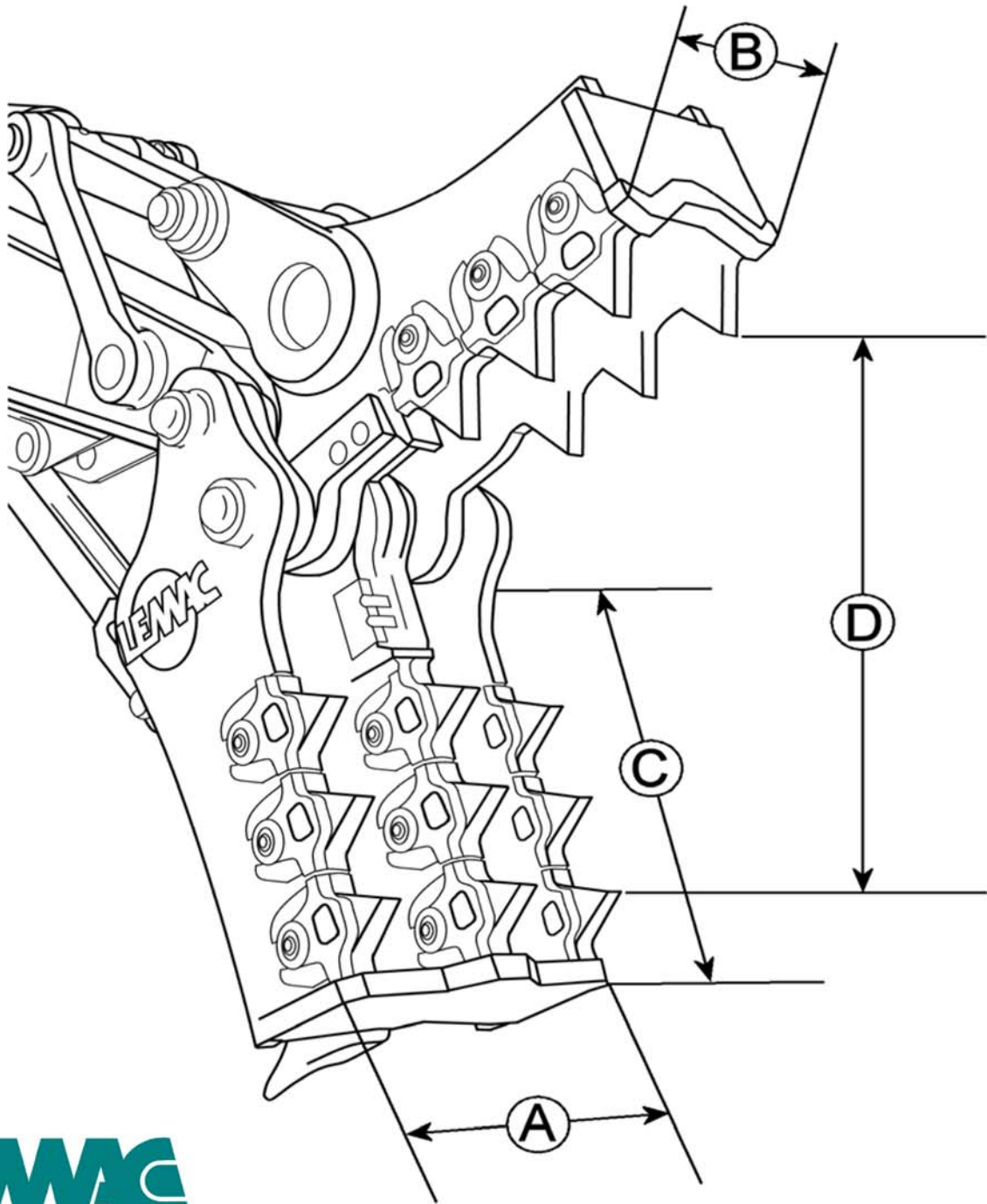




- ✔ **THIS RUGGED ATTACHMENT CRUSHES CONCRETE & REMOVES & CUTS REBAR, CREATING TWO RECYCLABLE PRODUCTS**
- ✔ **FEATURES EASILY REPLACEABLE BOLT-ON TEETH & REBAR CUTTERS - AS STANDARD**
- ✔ **REQUIRES NO ADDITIONAL HYDRAULICS, PINNING ON IN PLACE OF THE BUCKET IT UTILIZES THE EXCAVATORS BUCKET CYLINDER**
- ✔ **OFFSET PIVOT, MAXIMIZES CRUSHING FORCE, ALLOWS FOR OVERSIZING OF MAIN PIVOT PIN & REDUCES STRESS IMPOSED ON STICK.**
- ✔ **QUENCHED & TEMPERED ALLOY STEEL 130,000 psi MIN. YIELD, 360 - 440 BHN USED IN THE ENTIRE STRUCTURE OF CRUSHER JAW**
- ✔ **HEAT-TREATED PIN, BEARINGS, SEALS & "O" RINGS UTILIZED IN MAIN PIVOT**
- ✔ **LARGE DIAMETER ALLOY STEEL STAY ARM PINS**
- ✔ **ONE YEAR or 1,500 HOUR WARRANTY**
- ✔ **MANUFACTURED IN VIRGINIA, USA & SCOTLAND, UK**



	UNITS	CC25/CC25S	CC30	CC40	CC60	CC80
APPROX WEIGHT	LB	2,500 = 3,000	4,500 = 5,000	5,500 = 6,000	8,500 = 9,000	10,000 = 11,000
	KG	1,134 = 1,361	2,041 = 2,268	2,495 = 2,722	3,856 = 4,082	4,536 = 4,990
FIXED JAW WIDTH (A)	IN	25	28	31	34	39
	MM	635	711	787	864	991
MOVING JAW WIDTH (B)	IN	14	15	17	19	21
	MM	356	381	432	483	533
MAX JAW DEPTH (C)	IN	34	38	41	46	52
	MM	864	965	1,041	1,168	1,321
MAX JAW OPENING (D)	IN	41	45	49	54	60
	MM	1,041	1,143	1,245	1,372	1,524
MACHINE SIZE	LB	55,000 = 75,000	75,000 = 100,000	100,000 = 140,000	140,000 = 185,000	185,000 = 220,000
	KG	24,948 = 34,019	34,019 = 45,359	45,359 = 63,503	63,503 = 83,915	83,915 = 99,790

* CC25 - CC60 CRUSHERS ARE HEAVY DUTY MODELS WITH REPLACEABLE TEETH AND REBAR CUTTERS AND A RIPPER TOOTH AT THE REAR OF THE FIXED JAW.
 * CC25S HAS WELD-IN TEETH AND NO REBAR CUTTERS



BOLT ON TEETH

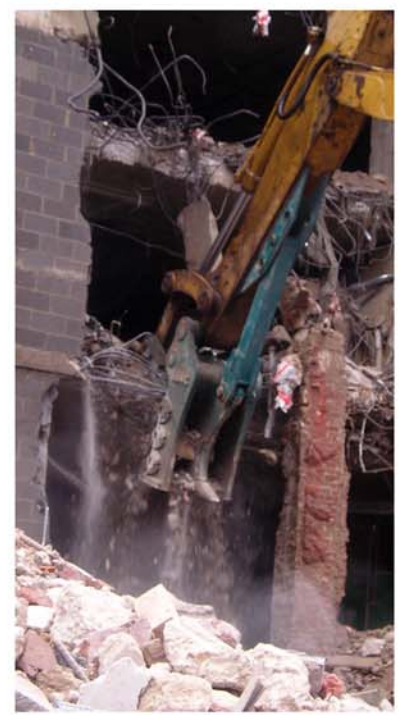


REBAR CUTTERS



HEAVY DUTY JAWS





CRUSH **CUT** **SORT**



LEMAC
ENGINEERING

UK / EUROPE

Email: uksales@lemaonline.com

Phone: +44 (0) 1259-751573

Website: www.LemaOnline.com

LEMAC
CORPORATION

US / CANADA

Email: sales@lemaonline.com

Phone: 1 (804) 862-8481

Distributed By:

(Attach Business Card Here)